

PIO/W 50

Pillow block and Flange chucks

NIKA®

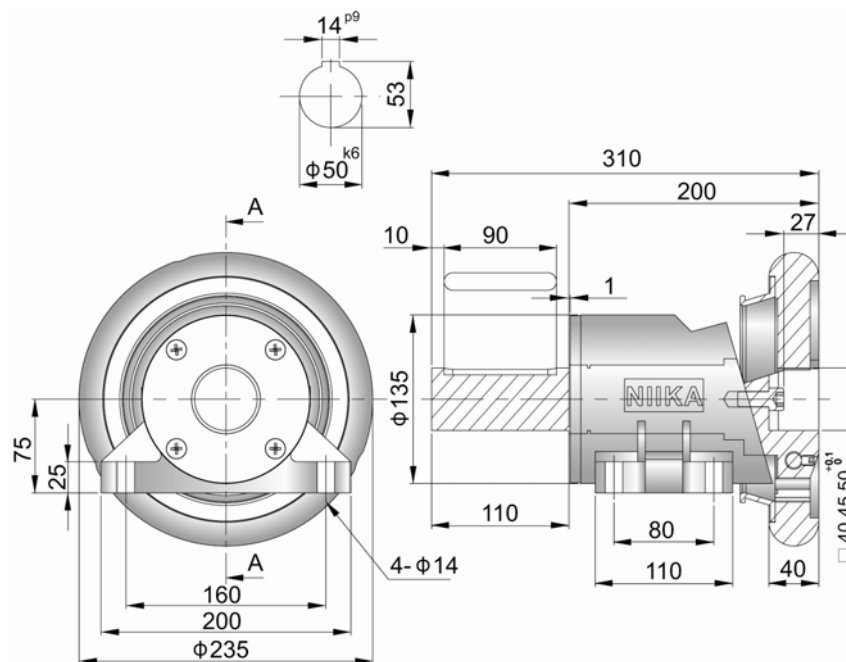
Size	PIO/W 50
Maximum load	2800 KG
Maximum torque allowed	110 kg m
Standard square bar size	40 45 50 mm
Unit Weight	53 kg



Our standard shaft diameter is Ø28 length 70 MM and can modify to meet your requirement

APPROXIMATE DIMENSION

PIO / PIW 50



NIKA Limited reserves the right to modify or change the design without prior notice.