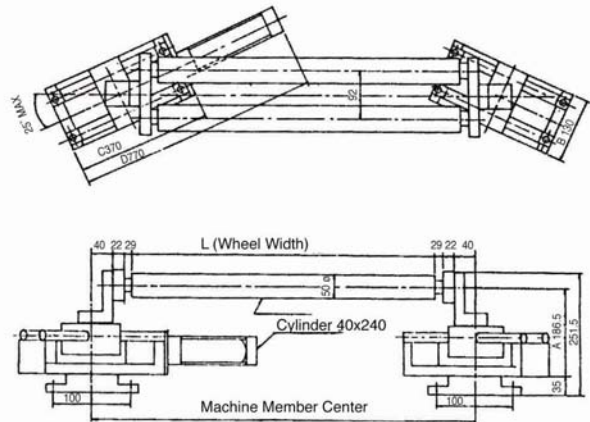


Oil Cylinder	A	B	C	D
40X240 Standard Type	186.5	130	370	730
50x240 Heavy Type	223	180	430	800
40X125 Light Type	186.5	130	242	485



## Intermediate guiding system

When needed to correct web position in the middle of the process line, Niika recommend you most economic item End pivot roll guider.

This method particularly good for flexible web. It is available, when location in long distance between entry idler roll and exit idler roll. The assumed pivot of the guide roll rotation be arranged to be ling, so turning angle of the guider rolls and the tension variation are lesser, will reducing the wrapping of the web. There have 90° wrap for single roll and 180° wrap for double rolls shown as below.

Mount the detector closer to the guide roll and secure do not allow web to contact the detector even when the pass line inclines for maximum correction.

The length of Y to be no less then 1 time of maximum web width, and Z to be about 2/3 of the Y. The distance X must arrange about 1 to 2 times of the maximum web width.

