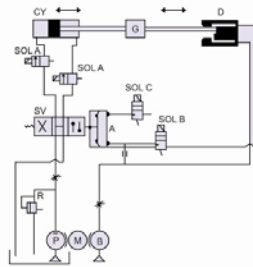
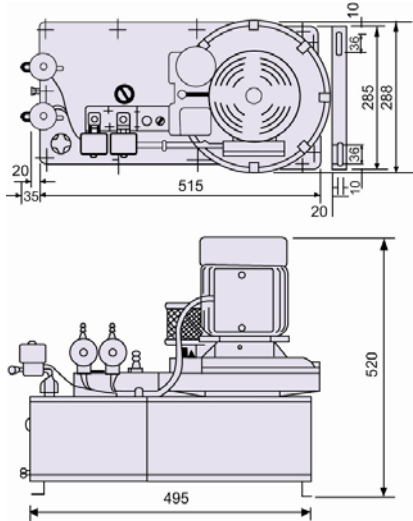
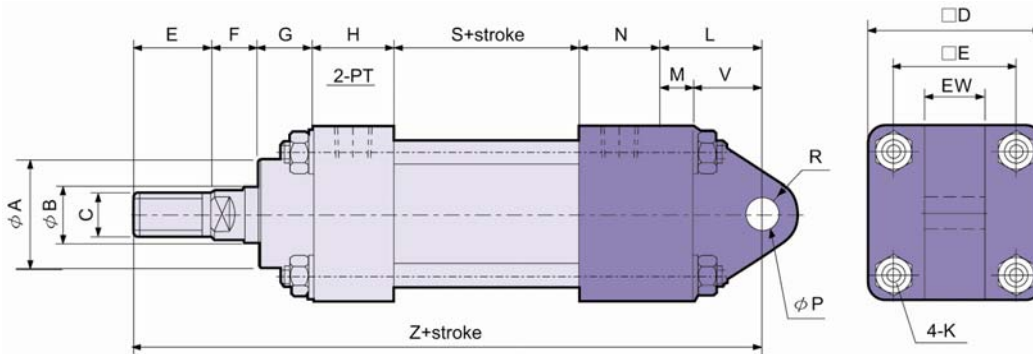


The specification base the same as HC-2A but several features as below:

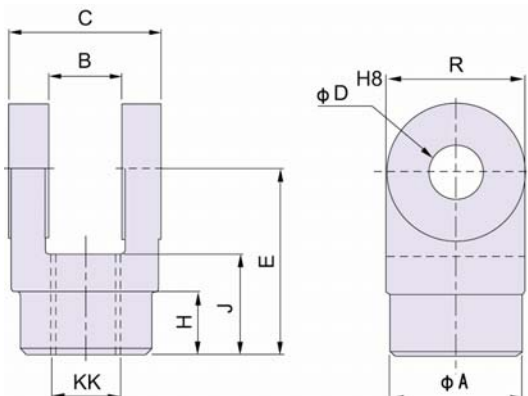
1. Temperature does not rise easily
2. The air not easy block because of direct air connection, which bring strong air to blow away of dust and wadding on sensor.



### CYLINDER DIMENSION:



SIZE BORE	ΦA	ΦB	C	□D	□DE	E	F	G	H	N	L	M	V	ΦP	R	EW	K	S	Z	PT
Φ40	40	20	M16XP1.5	64	45	28	17	20	30	30	36	11	25	12	13	22	M8XP1.25	50	211	3/8
Φ50	45	20	M16XP1.5	70	50	28	17	20	30	28	36	12	24	12	13	22	M10XP1.25	50	209	3/8



KK	A	B	C	D	E	J	H	R
M14XP1.5	26	16	44	12	56	20	21	14
M16XP1.5	26	16	44	12	56	20	21	14