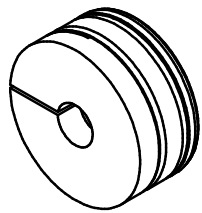
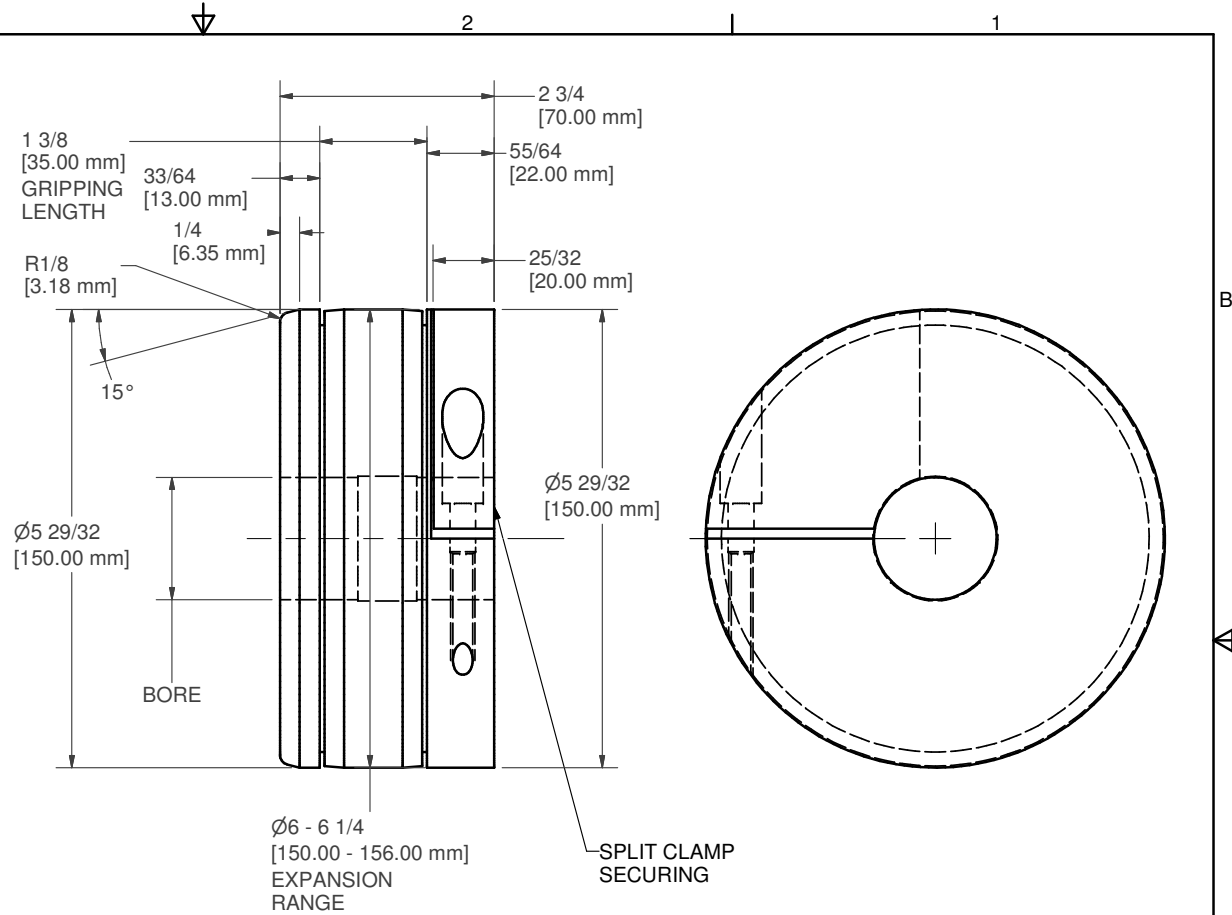


Part #	BORE		FITS OVER SHAFT		
	INCH	mm	INCH	mm	STYLE
Q-3289-001	0.752	19.1	0.75	19.05	SOLID
Q-3289-002	0.877	22.28	0.875	22.23	SOLID
Q-3289-003	1.002	25.45	1	25.40	SOLID
Q-3289-004	1.127	28.63	1.125	28.58	SOLID
Q-3289-005	1.252	31.8	1.25	31.75	SOLID
Q-3289-006	1.377	34.98	1.375	34.93	SOLID
Q-3289-007	1.502	38.15	1.5	38.10	SOLID
Q-3289-008	1.627	41.33	1.625	41.28	SOLID
Q-3289-009	1.752	44.5	1.75	44.45	SOLID
Q-3289-010	1.877	47.68	1.875	47.63	SOLID
Q-3289-011	2.002	50.85	2	50.80	SOLID
Q-3289-012	2.127	54.03	2.125	53.98	SOLID
Q-3289-013	2.252	57.2	2.25	57.15	SOLID
Q-3289-014	2.377	60.38	2.375	60.33	SOLID
Q-3289-015	2.502	63.55	2.5	63.50	SOLID
Q-3289-016	2.627	66.73	2.625	66.68	SOLID
Q-3289-017	2.752	69.9	2.75	69.85	SOLID
Q-3289-018	2.877	73.08	2.875	73.03	SOLID
Q-3289-019	2.953	75.01	2.951	74.96	SOLID
Q-3289-020	3.002	76.25	3	76.20	SOLID
Q-3289-021	3.127	79.43	3.125	79.38	SOLID
Q-3289-022	3.252	82.6	3.25	82.55	SOLID
Q-3289-023	3.377	85.78	3.375	85.73	SOLID
Q-3289-024	3.502	88.95	3.5	88.90	SOLID
Q-3289-025	2.881	73.18	2.875	73.03	LUG / BUTTON
Q-3289-026	2.953	75.01	2.937	74.60	LUG / BUTTON
Q-3289-027	2.99	75.95	2.937	74.60	LEAF
Q-3289-028	1.577	40.06	1.575	40.01	SOLID
Q-3289-029		0			



REPRESENTATIVE PICTURE
ACTUAL OPTIONS MAY VARY

- NOTES:
1. SUITABLE FOR CARDBOARD AND PLASTIC CORES
2. APPROXIMATE WEIGHT 22# [10 kg]

UNLESS OTHERWISE SPECIFIED	
ALL DIAMETERS TO BE CONCENTRIC WITHIN 0.003	
REMOVE ALL BURRS & SHARP EDGES	125 ✓
CUSTOMER	DIMENSION
FINISH	FRACTIONAL
VARIOUS	ANGULAR
MATERIAL	X.XX
REFERENCE DRAWING	X.XXX
NEF	X.XXXX
TOLERANCE ±	
	1/64
	0.5°
	0.010
	0.005
	0.0005

JRC WEB ACCESSORIES 46 PASSAIC AVENUE FAIRFIELD, NJ 07004			
TITLE			
MECHANICAL CHUCK - 6" ID CORES			
SIZE	DATE	DWG NO	REV
B		Q-3289	
SCALE	DRAWN	SHEET	1 OF 1