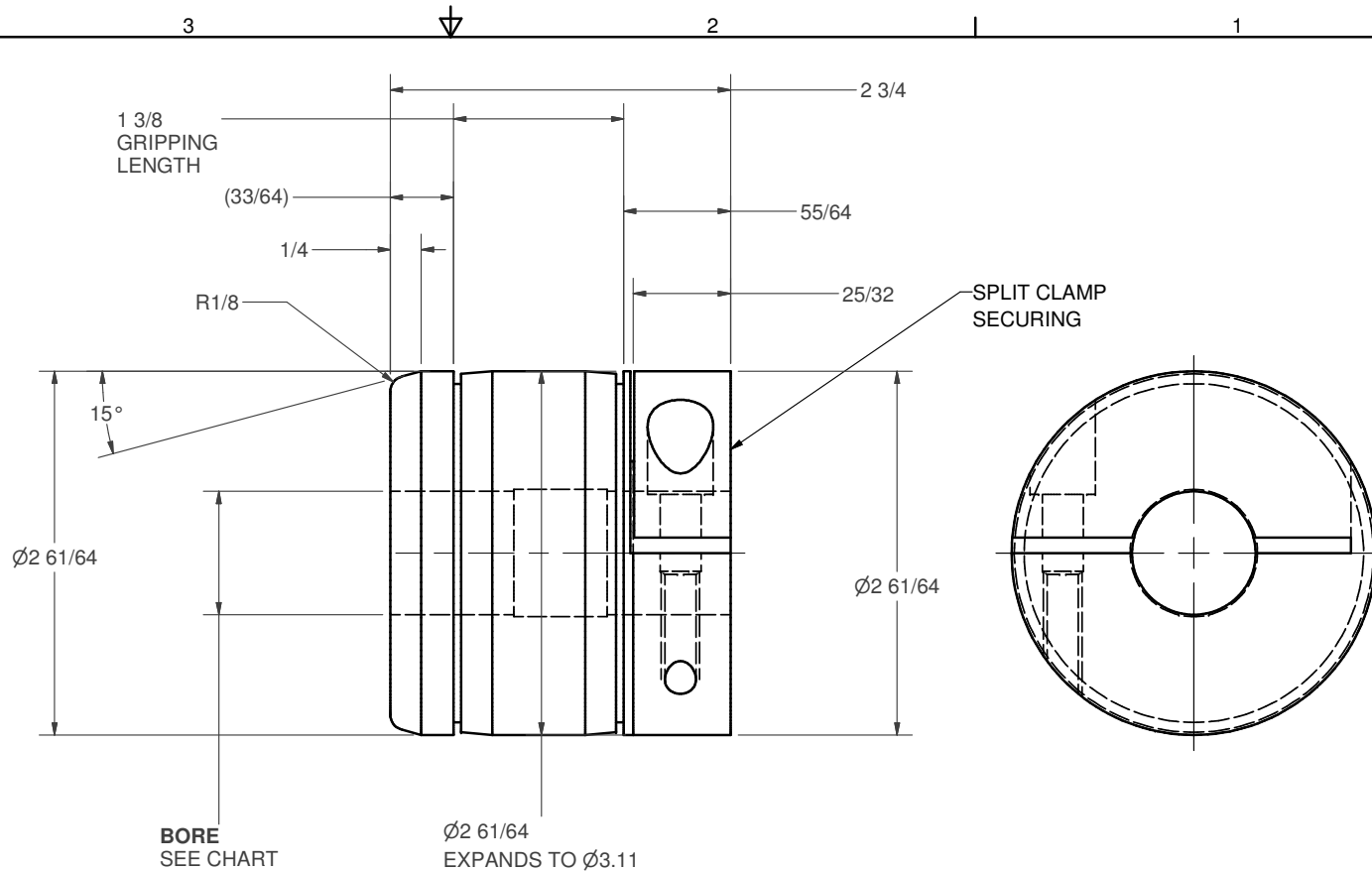


Part #	BORE <sup>+0.002</sup> <sub>-0.000</sub> (inches)	BORE <sup>+0.05</sup> <sub>-0.000</sub> (mm)
Q-3237-001	0.752	
Q-3237-002	0.877	
Q-3237-003	1.002	
Q-3237-004	1.127	
Q-3237-005	1.252	
Q-3237-006	1.377	
Q-3237-007	1.502	
Q-3237-008	1.627	
Q-3237-009	1.752	
Q-3237-010		25.05
Q-3237-011		
Q-3237-012		



NOTES:  
 1. SUITABLE FOR CARDBOARD AND PLASTIC CORES  
 2. APPROXIMATE WEIGHT 5#

UNLESS OTHERWISE SPECIFIED		JRC WEB ACCESSORIES	
ALL DIAMETERS TO BE CONCENTRIC WITHIN 0.003		46 PASSAIC AVENUE FAIRFIELD, NJ 07004	
REMOVE ALL BURRS & SHARP EDGES		TITLE	
125 ✓		MECHANICAL CHUCK - 3" ID CORES - NEF SERIES	
CUSTOMER	DIMENSION	TOLERANCE ±	SIZE DATE
FINISH VARIOUS	FRACTIONAL	1/64	DWG NO
MATERIAL	ANGULAR	0.5°	REV
REFERENCE DRAWING	X.XX	0.010	B
	X.XXX	0.005	Q-3237
	X.XXXX	0.0005	SCALE
			DRAWN
			SHEET 1 OF 1