

4

3

2

1

FULL LENGTH KEYWAY  
YES / NO

FIXED CORE STOP  
YES / NO

ADJUSTABLE CORE STOP  
YES / NO

ØD = \_\_\_\_\_

ØE = \_\_\_\_\_

2 1/2

C = \_\_\_\_\_  
LEAF LENGTH

2 1/2

2 5/8

5/8 ± 1/2  
(ADJUSTMENT RANGE)

5/8

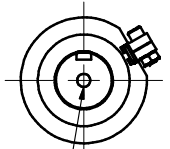
ADJUSTING SCREW

ADJUSTING NUT

F = \_\_\_\_\_ ± 1/2  
(ADJUSTMENT RANGE)

B = \_\_\_\_\_

A = \_\_\_\_\_



AIR INLET  
1/8 NPT  
OR  
OTHER \_\_\_\_\_

**UNLESS OTHERWISE SPECIFIED**  
ALL DIAMETERS TO BE  
CONCENTRIC WITHIN 0.003  
REMOVE ALL BURRS  
& SHARP EDGES

125 ✓

**JRC WEB ACCESSORIES**  
46 PASSAIC AVENUE FAIRFIELD, NJ 07004

TITLE  
**MD SERIES JRC LATERAL ADJUSTING  
AIR SHAFT**

CUSTOMER	
FINISH	VARIOUS
MATERIAL	
REFERENCE DRAWING	

DIMENSION	TOLERANCE ±
FRACTIONAL	1/64
ANGULAR	0.5°
X.XX	0.010
X.XXX	0.005
X.XXXX	0.0005

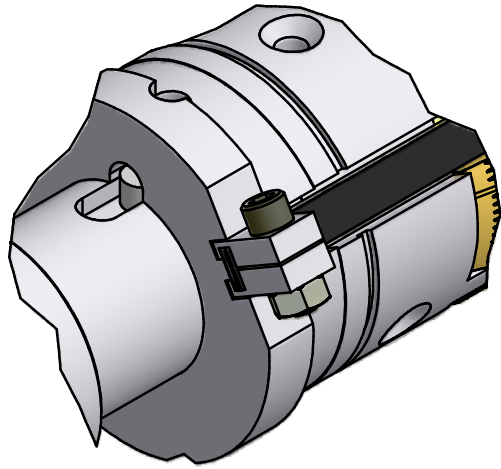
SIZE	DATE	DWG NO	REV
B		Q-3329	
SCALE	DRAWN	SHEET 1 OF 2	

4

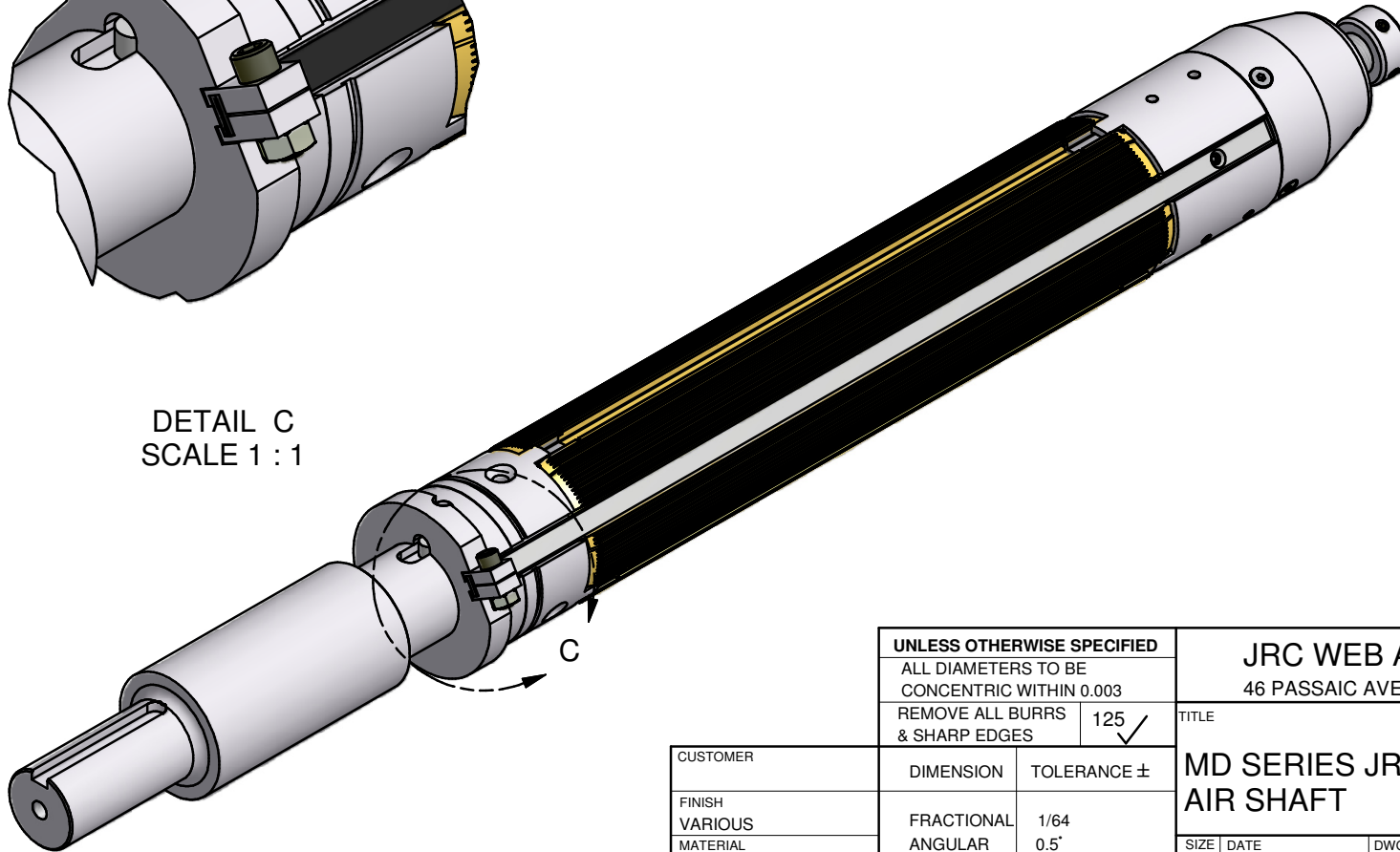
3

2

1



DETAIL C  
SCALE 1 : 1



UNLESS OTHERWISE SPECIFIED		JRC WEB ACCESSORIES	
ALL DIAMETERS TO BE CONCENTRIC WITHIN 0.003		46 PASSAIC AVENUE FAIRFIELD, NJ 07004	
REMOVE ALL BURRS & SHARP EDGES		125 ✓	TITLE
CUSTOMER	DIMENSION	TOLERANCE ±	MD SERIES JRC LATERAL ADJUSTING AIR SHAFT
FINISH	FRACTIONAL	1/64	SIZE DATE
VARIOUS	ANGULAR	0.5°	DWG NO
MATERIAL	X.XX	0.010	REV
REFERENCE DRAWING	X.XXX	0.005	B Q-3329
	X.XXXX	0.0005	SCALE DRAWN SHEET 2 OF 2