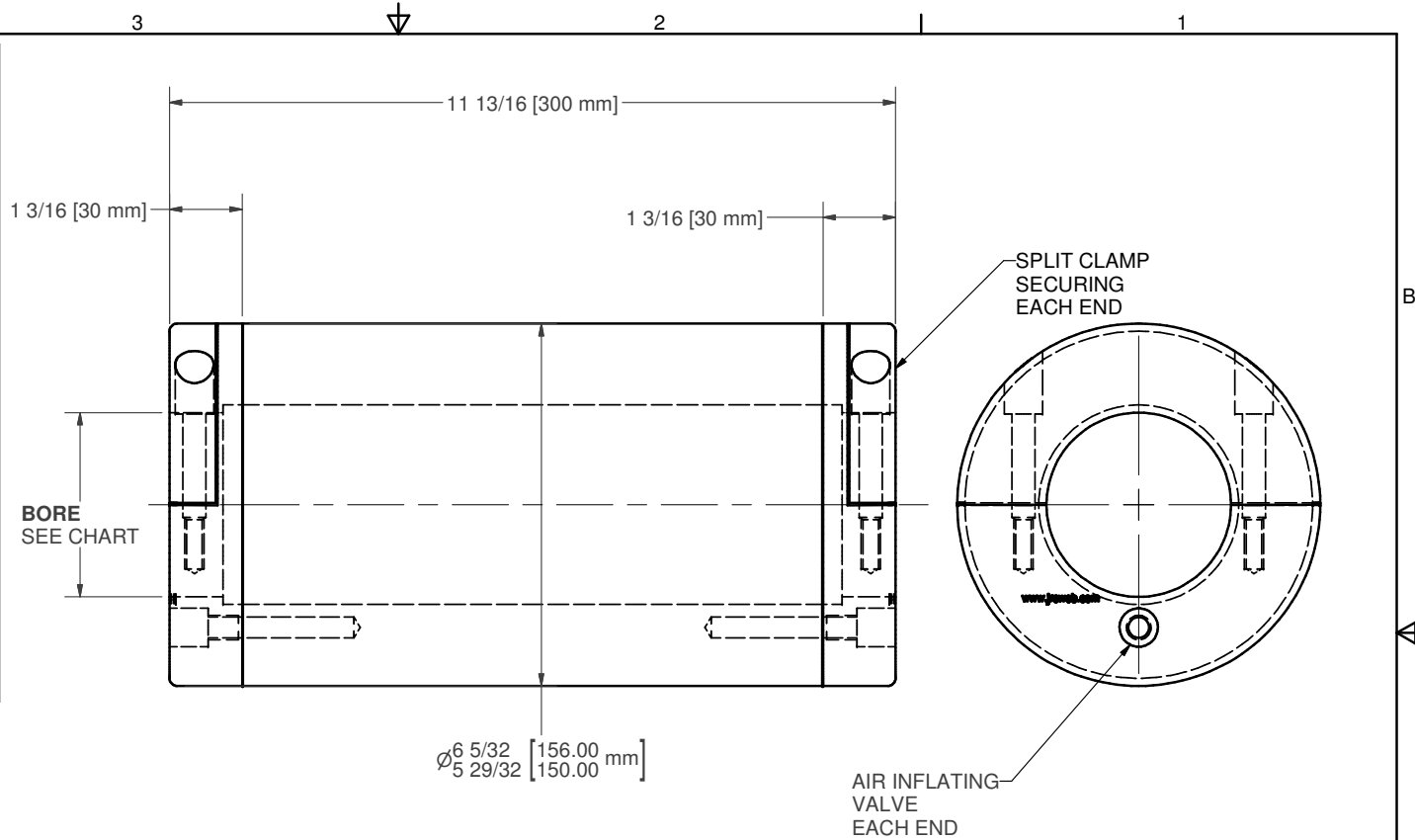


Part #	INCH		METRIC		FITS OVER SHAFT	
	BORE ^{+0.002}	^{-0.000}	BORE ^{+0.05}	^{-0.00}	OUTER DIA.	STYLE
Q-3228-001	0.752		19.10		0.750	SOLID
Q-3228-002	0.877		22.28		0.875	SOLID
Q-3228-003	1.002		25.45		1.000	SOLID
Q-3228-004	1.127		28.63		1.125	SOLID
Q-3228-005	1.252		31.80		1.250	SOLID
Q-3228-006	1.377		34.98		1.375	SOLID
Q-3228-007	1.502		38.15		1.500	SOLID
Q-3228-008	1.627		41.33		1.625	SOLID
Q-3228-009	1.752		44.50		1.750	SOLID
Q-3228-010	1.877		47.68		1.875	SOLID
Q-3228-011	2.002		50.85		2.000	SOLID
Q-3228-012	2.127		54.03		2.125	SOLID
Q-3228-013	2.252		57.20		2.250	SOLID
Q-3228-014	2.377		60.38		2.375	SOLID
Q-3228-015	2.502		63.55		2.500	SOLID
Q-3228-016	2.627		66.73		2.625	SOLID
Q-3228-017	2.752		69.90		2.750	SOLID
Q-3228-018	2.877		73.08		2.875	SOLID
Q-3228-019	2.953		75.01		2.951	SOLID
Q-3228-020	3.002		76.25		3.000	SOLID
Q-3228-021	3.127		79.43		3.125	SOLID
Q-3228-022	3.252		82.60		3.250	SOLID
Q-3228-023	3.377		85.78		3.375	SOLID
Q-3228-024	3.502		88.95		3.500	SOLID
Q-3228-025	2.881		73.18		2.875	LUG / BUTTON
Q-3228-026	2.953		75.01		2.937	LUG / BUTTON
Q-3228-027	2.990		75.95		2.937	LEAF
Q-3228-028			0.00			
Q-3228-029			0.00			



REPRESENTATIVE PICTURE
ACTUAL OPTIONS MAY VARY

- NOTES:
 1. APPROXIMATE WEIGHT: 20# OR 9kg EACH
 2. AIR INFLATING GUN INCLUDED WITH EACH NEW ORDER

SEE ON WEBSITE AT:
http://www.jrcweb.com/Thru_Bore_Lug_Style_Air_Adapter_Chuck_p/ned-001%20-fslash-%20ned-002.htm

UNLESS OTHERWISE SPECIFIED		JRC WEB ACCESSORIES	
ALL DIAMETERS TO BE CONCENTRIC WITHIN 0.003		46 PASSAIC AVENUE FAIRFIELD, NJ 07004	
REMOVE ALL BURRS & SHARP EDGES		TITLE	
125 ✓		AIR CHUCK - LUG TYPE - 6" ID CORES - NED SERIES	
CUSTOMER	DIMENSION	SIZE	DATE
FINISH	FRACTIONAL	B	
MATERIAL	ANGULAR	DWG NO	
REFERENCE DRAWING	X.XX	Q-3228	
NED-002-6-300	X.XXX	SCALE	DRAWN
	X.XXXX	SHEET 1 OF 1	