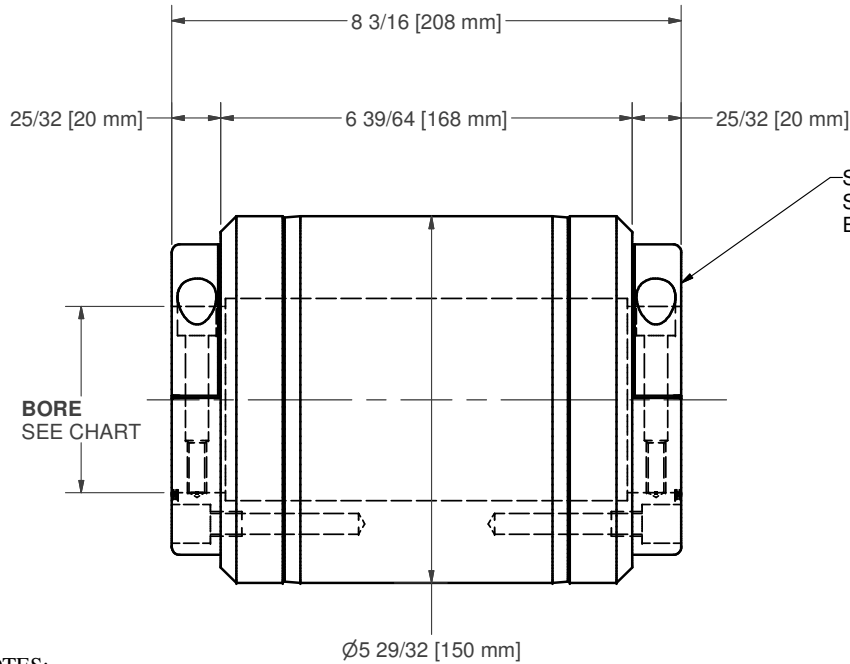
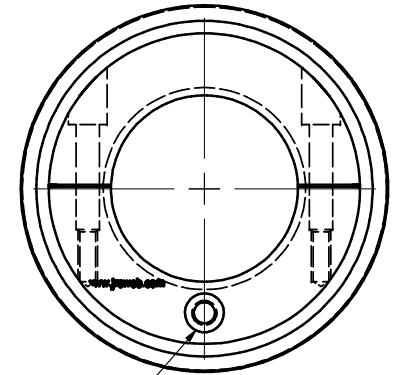


Part #	BORE ^{+0.002} _{-0.000}
Q-3227-001	0.752
Q-3227-002	0.877
Q-3227-003	1.002
Q-3227-004	1.127
Q-3227-005	1.252
Q-3227-006	1.377
Q-3227-007	1.502
Q-3227-008	1.627
Q-3227-009	1.752
Q-3227-010	1.877
Q-3227-011	2.002
Q-3227-012	2.127
Q-3227-013	2.252
Q-3227-014	2.377
Q-3227-015	2.502
Q-3227-016	2.627
Q-3227-017	2.752
Q-3227-018	2.877
Q-3227-019	3.002
Q-3227-020	3.127
Q-3227-021	3.252
Q-3227-022	3.377
Q-3227-023	3.502
Q-3227-024	2.953



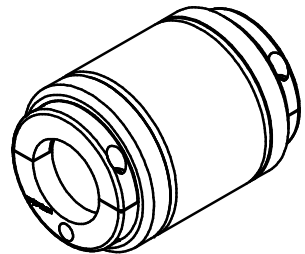
SPLIT CLAMP
SECURING
EACH END

BORE
SEE CHART



AIR INFLATING
VALVE
EACH END

NOTES:
SPECIFICATIONS (WITH 3" BORE)
WEIGHT: 9.5 pounds or 4.3 kgs each
MAX. ROLL WEIGHT: 440 pounds
or 200 Kg per pair
MAX. TORQUE: 6950 inch pounds or
80 kilogram force meter per pair



UNLESS OTHERWISE SPECIFIED		JRC WEB ACCESSORIES	
ALL DIAMETERS TO BE CONCENTRIC WITHIN 0.003		46 PASSAIC AVENUE FAIRFIELD, NJ 07004	
REMOVE ALL BURRS & SHARP EDGES		TITLE	
125 ✓		AIR CHUCK - RUBBER TYPE - 6" ID CORES	
CUSTOMER	DIMENSION	SIZE	DATE
FINISH	FRACTIONAL	B	Q-3227
MATERIAL	ANGULAR	DWG NO	
REFERENCE DRAWING	X.XX	SHEET 1 OF 1	
NED-003-6-208	X.XXX	DRAWN	
	X.XXXX	SCALE	